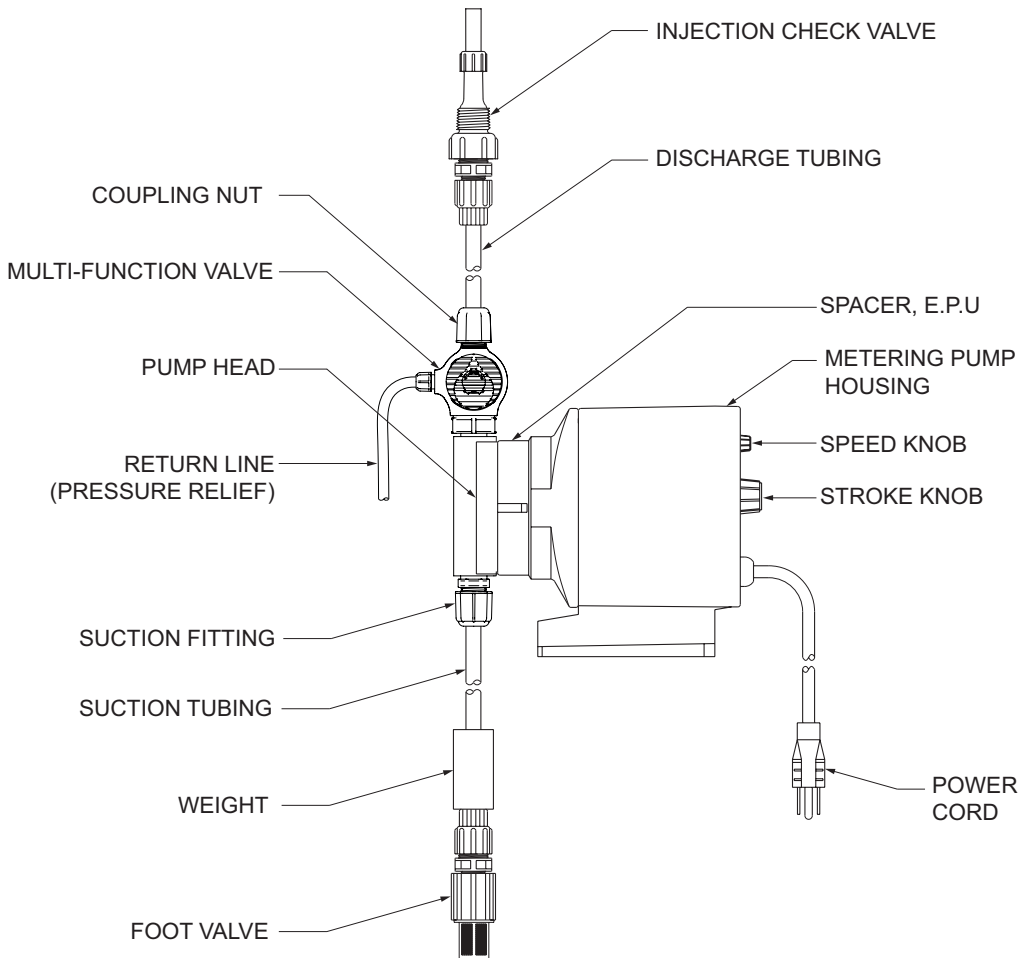




LMI[®]

an Accudyne Industries brand



Metering Pump Component Diagram

Series P7

Electronic Metering Pump

Instruction Supplement

Manual No : 1945

Rev. : D

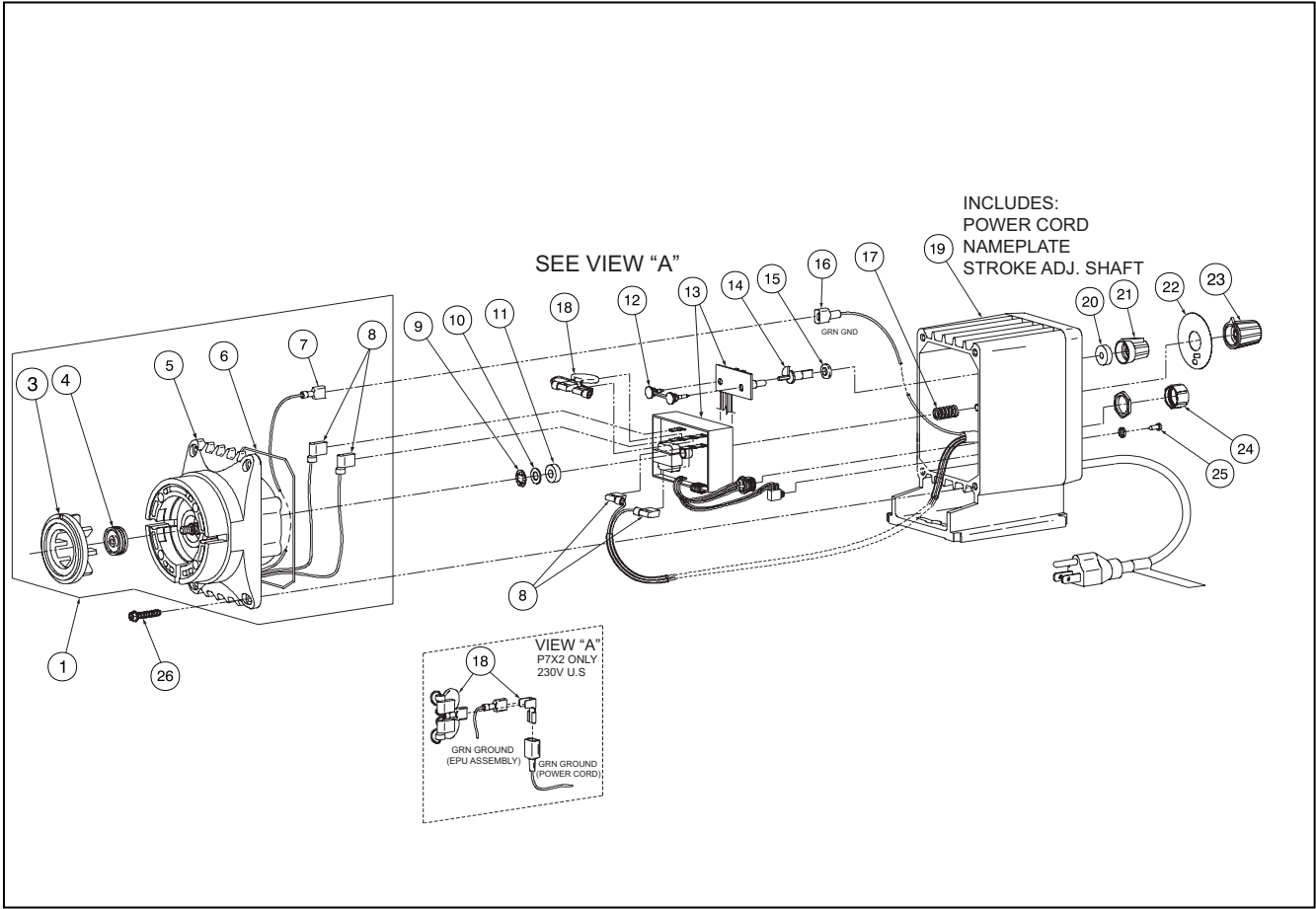
Rev. Date : 10/2015



LMI[®]

an Accudyne Industries brand

SERIES P7 DRIVE ASSEMBLY EXPLODED VIEW DIAGRAM



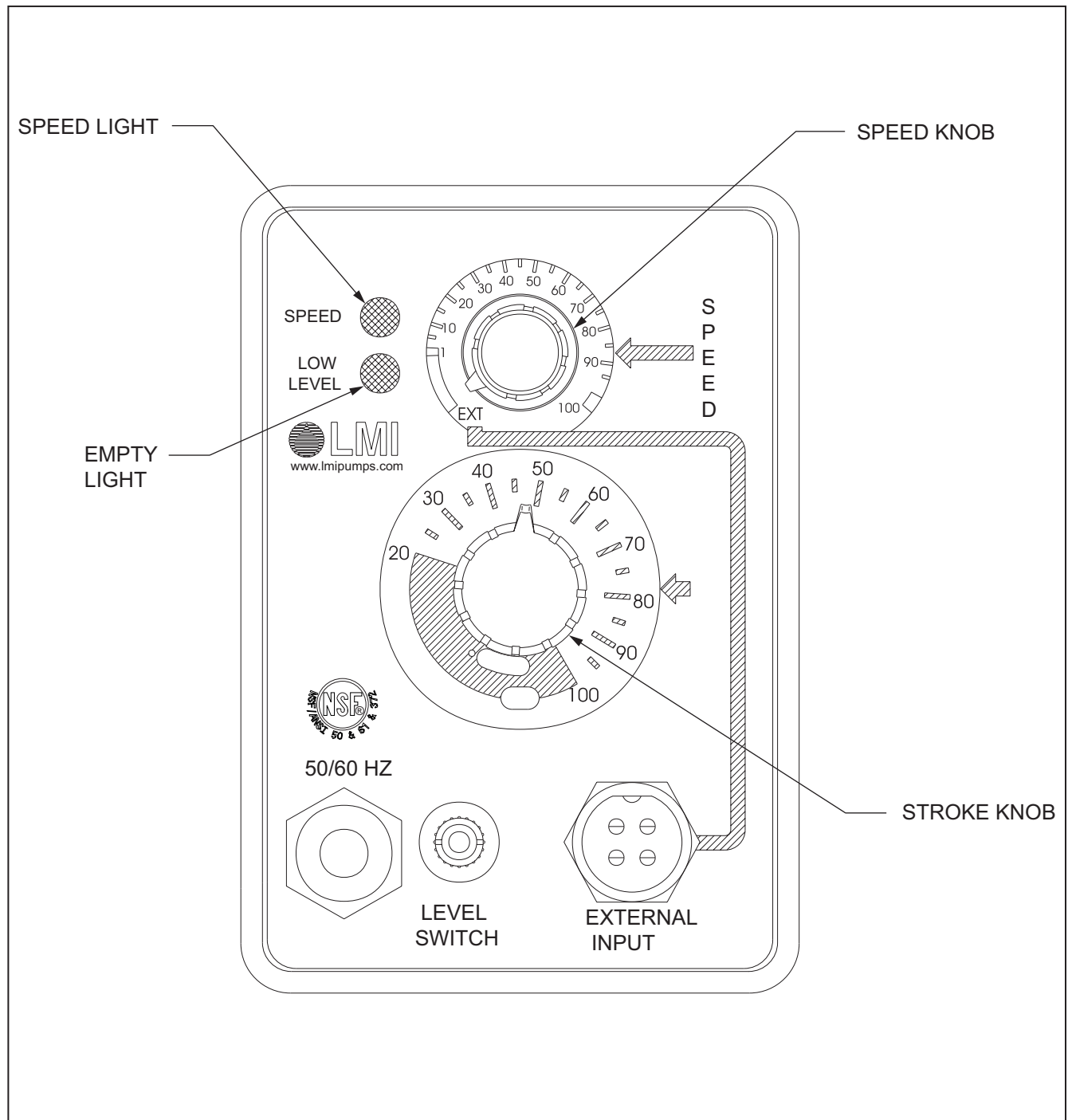
SERIES P7 DRIVE ASSEMBLY PARTS LIST

Key Number	Model Series	Part Number	Description	Qty
1	P741	30240	EPU WITH DISK 0.5	1
	P742, P743, P745, P746, P747	30241	EPU WITH DISK 0.5	
	P751	30242	EPU WITH DISK 0.9	
	P752, P753, P755, P756, P757	30243	EPU WITH DISK 0.9	
	P761	33338	EPU WITH DISK 1.8	
	P762, P763, P765, P766, P767	31781	EPU WITH DISK 1.8	
3	P74	29445	DISK 0.5	1
	P75	29437	DISK 0.9	
	P76	29442	DISK 1.8	
4	P7	10973	SEAL	1
5	P741, P751	30154	EPU	1
	P742, P743, P745, P746, P747, P752, P753, P755, P756, P757	30155		
	P761	31862		
	P762, P763, P765, P766, P767	31131		
6	P7	10166	O-RING	1
7	P7	10182-1	WIRE TERMINAL (FEMALE)	1
8	P7	25070-1	WIRE TERMINAL (FLAG)	4
9	P7	10422	RETAINING RING	1
10	P7	25963	WASHER, NYLON	1
11	P7	30391	WASHER, RUBBER	1
12	P7	35744	DUAL PIN	1
13	P741, P751, P761	37823	PULSER, 115V	1
	P742, P752, P762, P743, P753, P763, P745, P755, P765, P746, P756, P766, P747, P757, P767	37824	PULSER, 230V	1

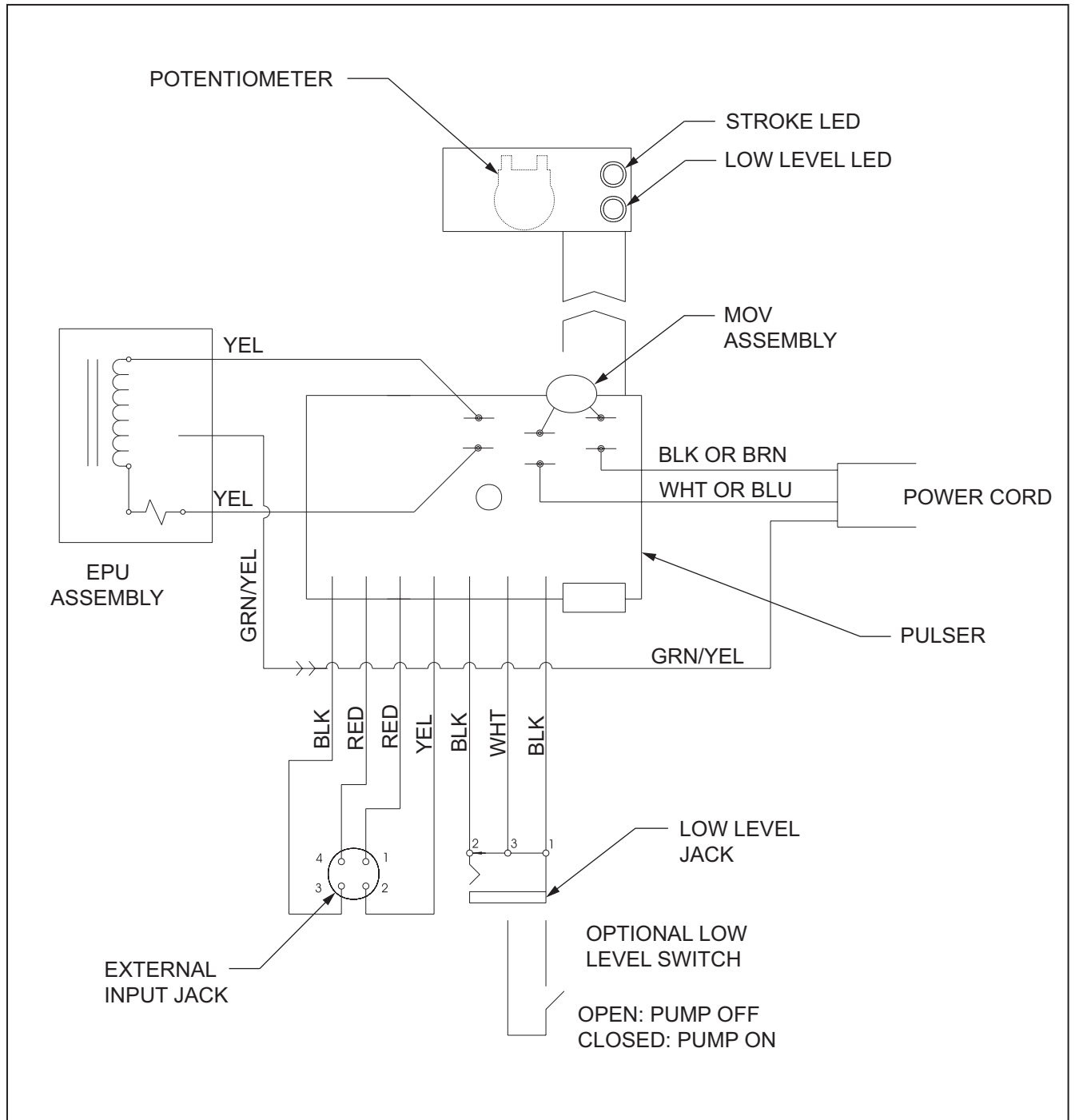
SERIES P7 DRIVE ASSEMBLY PARTS LIST

Key Number	Model Series	Part Number	Description	Qty
14	P7	35743	SPEED SHAFT	1
15	P7	34497	O-RING	1
16	P7	10368-1	WIRE TERMINAL (MALE)	1
17	P7	25414	SPRING	1
18	P741, P751, P761	33448	VARISTOR ASSEMBLY, 115V	1
	P742, P752, P762	31255	VARISTOR ASSEMBLY, 230V US	
	P743, P753, P763, P745, P755, P765, P746, P756, P766, P747, P757, P767	33449	VARISTOR ASSEMBLY, 230-250V	
19	P741, P751, P761	38429	HOUSING ASSEMBLY, 115V	1
	P742, P752, P762	38430	HOUSING ASSEMBLY, 230V US	
	P743, P753, P763	38431	HOUSING ASSEMBLY, 230V DIN	
	P745, P755, P765	38432	HOUSING ASSEMBLY, 240V UK	
	P746, P756, P766	38433	HOUSING ASSEMBLY, 250V AUST	
	P747, P757, P767	38434	HOUSING ASSEMBLY, 230V SWISS	
20	P7	30803	GASKET	1
21	P7	30709	STROKE KNOB	1
22	P76	31127	STROKE DIAL	1
23	P7	31891	STROKE KNOB	1
24	P7	25930	CAP	1
25	P7	30307	PLUG	1
26	P7	30306	SCREW	4

SERIES P7 CONTROL PANEL DETAIL



SERIES P7 WIRING DIAGRAM



We are a proud member of Accudyne Industries, a leading global provider of precision-engineered, process-critical, and technologically advanced flow control systems and industrial compressors. Delivering consistently high levels of performance, we enable customers in the most important industries and harshest environments around the world to accomplish their missions.



LMI® is a registered trademark of Milton Roy, LLC.
© 2000, 2015 Milton Roy, LLC.
Specifications to change without notice.

info@lmipumps.com
www.lmipumps.com

